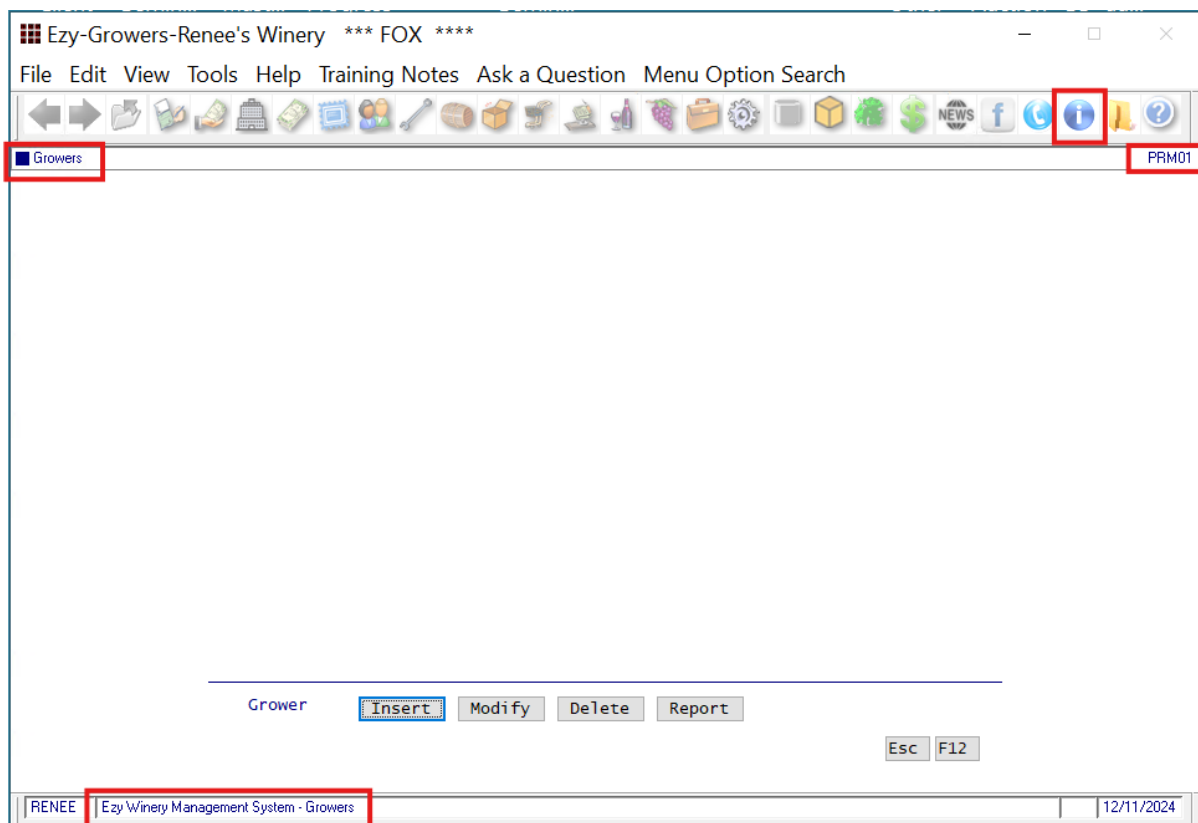




## Delete a grower booking for an Inactive Grower Booking

There are a few steps we need to do as follows.

- 1: Go into **Weighbridge Reference maintenance** menu  
Select **Grower**  
Select **System parameter information icon** top right corner of below image.



This will create a report of system parameters.

- 2: We want to ensure that **Grower: Maintain inactive grower** is set to **yes**.  
If it is not set to yes you will need to change this in the system parameters.
- 3: In Grower menu, select **modify** grower, set grower to **active** again.
- 4: In **Grower Booking** menu, **Delete** bookings by Grower
- 5: Return to **Grower** menu, modify grower back to **inactive**.
- 6: If you changed **Grower: Maintain inactive grower** to **yes** then we can go back and change back to **No**. If the parameter was not changed then omit step 6.