



Roll Vintage moving from Current Vintage to New Vintage

Please read these notes through before starting your End of Vintage Update

Running **End of Vintage Update** (or Rolling Vintage) in Ezy will set you up for the new year and keep all the incoming fruit separated from the previous vintage records.

STEP 1. Copy Varieties to New Vintage

Winemaking – Vintage Administration – Copy Varieties to New Vintage

The screenshot shows a dialog box titled "Copy Varieties To New Vintage" with the window ID "PRA10". It contains two input fields: "From Vintage" with the value "2024" and "To Vintage" with the value "2025". Below the fields is a confirmation prompt: "Commit Copy Varieties To New Vintage ?" with "Yes" and "No" buttons. At the bottom right, there are "Esc" and "F12" buttons.

STEP 2. Copy Payment Terms & Rates

Winemaking – Vintage Administration – Copy Payment Terms & Rates

The screenshot shows a dialog box titled "Copy Payment Terms & Rates" with the window ID "PRA18". It contains three input fields: "From Vintage" with the value "2024", "To Vintage" with the value "2025", and "Zero Rates" with the value "No".

Zero Rates allows the option of resetting ALL the **Grower Payment Rates** for the New Vintage (2025) to zero.

If you decide to 'Zero' the **Grower Payment Rates**, there is an Import option **Import Grower Payment Rates** to reload the new vintage (2025) payment rates.

Both **Payment Terms** and **Grower Payment Rates** are found in:
Winemaking - Weighbridge Reference Maint. - ...

Roll Vintage Pictorial Instructions.

STEP 3. Copy Payment Terms & Rates

Winemaking – Vintage Administration – Copy Grower Deliveries

Copy Grower Deliveries		PRA28
From Vintage	2024	
To Vintage	2025	
Copy Payment Rates	Yes	
Zero Estimated Tonnes	No	
Overwrite Estimated Tonnes	No	

Copy Payment Rates

This does the same as the previous “Zero Rates” option.

Yes: It will copy forward the 2024 Vintages Rates.

No: will set the 2025 Vintages rates to Zero.

Zero Estimated Tonnes

This will set the ‘Expected Tonnes’ (**Grower Deliveries**) for the 2025 Vintage to Zero.

If you do this, you will need to re-enter ‘Expected Tonnes’ for ALL **Grower Deliveries**.

There is an **Import Grower Deliveries** menu (**Vintage Administration**) to re-load expected **Grower Deliveries**.

Please note, if the 2025 Vintage already has Estimated Tonnes (**Grower Deliveries**) recorded, then the **Zero Estimated Tonnes** will **NOT** Zero the Estimated Tonnes for 2025.

Overwrite Estimated Tonnes

This would be rarely used. It allows you to recopy ‘Estimated Tonnes’ in the event they were inadvertently set to Zero.

Roll Vintage Pictorial Instructions.

STEP 4. Copy Stock Items

Stock Control – Stock Administration – Copy Stock Items

New Vintage (2025) Bulk Wine **Stock Item** codes and **Wine** codes need to be created. You can automate this process as per below.

COPY FROM:		COUNT
Stock Item	24?????????????	5
Stock Group	BULK	Bulk Wines

COPY TO:	
Stock Item	25?????????????
Copy Costs	No
Copy Prices	Yes
Copy Discounts	Yes
Copy Barcodes	Yes
Copy Alias	Yes
Copy Reorder Levels	Yes
Copy Bottling Spec	Yes
Copy Quantity Bonus	No
Copy Debtor/Stock GL A/Cs	No
Copy Reward Points	No

Modify Sales Text No

Select Whether To Copy Stock Item Costs [SCROLL LIST]

Ensure **Copy From: Stock Item** field is loaded as per your bulk wine naming convention, usually; vintage YY and as many question marks as the field allows.

Any blank spaces will mean the copy will not work.

This also applies to the **Copy To: Stock Item** field.

Stock Group should be your equivalent for the Bulk Wine group.

Ensure written descriptions are changed on each record that reflects the Vintage year.

Stock Item	Alias
25CAS	BULK
Description	2024 Cabernet

If your 'dataset' has 'Additional Stock Groups' setup (e.g. Vintage, Category, Region), then you will also need to change these to reflect current details

Stock Control – Stock Reference Maintenance – Additional Stock Groupings

Roll Vintage Pictorial Instructions.

The following **Stock Items** report can be run to view the new Vintage codes created;
Stock Control – Stock Reference Reports – Stock Items

Stock Items STR01

Format: Summary (One Line) [v]
Print Units: No [v]
Print Notes: No [v]
Stock Area Of Use: Bulk Wine/Juice [v]
Sequence: Stock Item [v]

Selection Criteria

	From	To
Stock Item		
Alias		
Stock Group		
Location		
Sales Group		
Unit		
ABS Class		
Alcohol Type		
Created Date	15/01/2025 [v]	15/01/2025 [v]
VINTAGE		

'Maintenance Details' on all new codes can be amended through;
Stock Control - Stock Reference Maintenance - Stock items

The actual **Stock Items** code can be amended through;
Stock Control - Stock Administration – Change Stock Item Code

Change Stock Item Code STA23

Change Stock Item Code

Roll Vintage Pictorial Instructions.

STEP 5. Levy Rates

Winemaking – Weighbridge Reference Maintenance – Levy Rates & Dates

If you're using Ezy to manage your Levy responsibilities, now is the time to create or revise them.

****Remember, that once your FIRST Grower Payment is made the Levy program 'locks down' and you cannot insert or modify Levy Rates & Dates.**

Weighbridge Reference Maintenance - Levy Areas; Levy Types; Levy Rates & Dates

	Vintage	Levy Area	Name
<input type="checkbox"/>	2021	YARR	Yarra Valley
<input type="checkbox"/>	2022	BEND	Bendigo
<input type="checkbox"/>	2022	HEAT	Heathcote
<input type="checkbox"/>	2022	MACE	Macedon Rages
<input type="checkbox"/>	2022	YARR	Yarra Valley
<input type="checkbox"/>	2023	BEND	Bendigo
<input type="checkbox"/>	2023	HEAT	Heathcote
<input type="checkbox"/>	2023	MACE	Macedon Rages
<input type="checkbox"/>	2023	YARR	Yarra Valley
<input type="checkbox"/>	2024	BEND	Bendigo
<input type="checkbox"/>	2024	HEAT	Heathcote
<input type="checkbox"/>	2024	MACE	Macedon Rages
<input type="checkbox"/>	2024	YARR	Yarra Valley
<input checked="" type="checkbox"/>	2025	BEND	Bendigo
<input checked="" type="checkbox"/>	2025	HEAT	Heathcote
<input checked="" type="checkbox"/>	2025	MACE	Macedon Rangers
<input checked="" type="checkbox"/>	2025	YARR	Yarra Valley

Levy Rates & Dates can be created to reflect the Levy payment for each **Levy Area**.

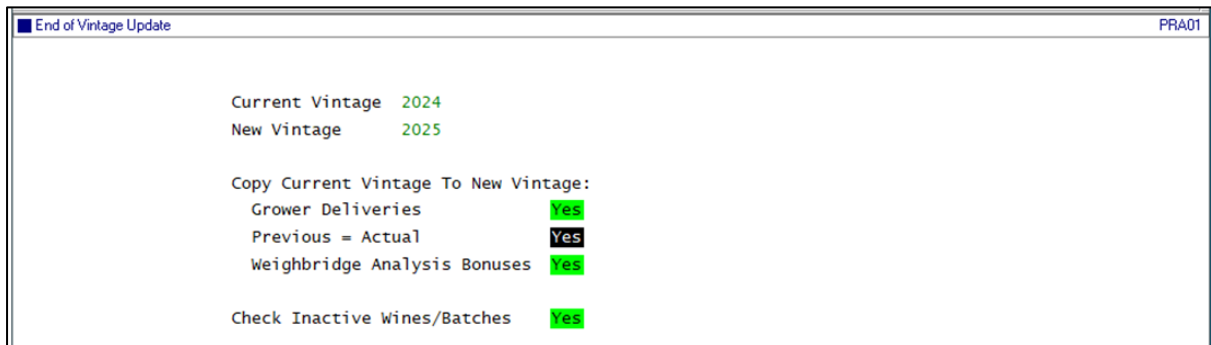
Vintage	2025
Levy Area	

Levy Areas must be created before you can apply **Levy Rates & Dates**.

Roll Vintage Pictorial Instructions.

STEP 6. End of Vintage Update

Winemaking – Vintage Administration – End of Vintage Update



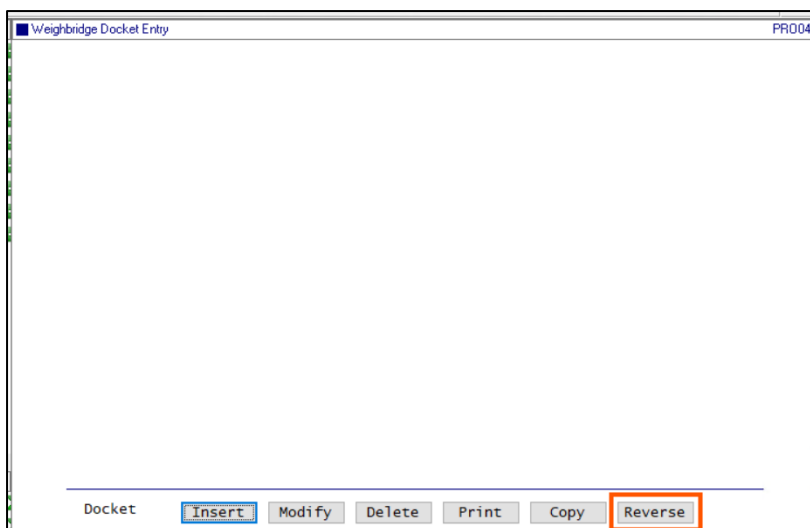
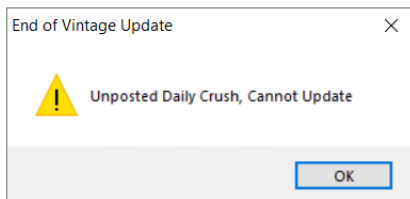
End of Vintage Update has several validation checks built in and these include:

*Un-Updated Weighbridge & Crush Dockets

The program will check for any un-updated Weighbridge or Crush Dockets for the current Vintage (2024) and will not 'Roll' if it finds any.

If you have leftover Crush Dockets, there is a '**Reverse**' option within **Weighbridge Docket Entry** whereby the program will produce a Weighbridge Docket with 'negative tonnes' which will 'zero out' the tonnes on the Crush Docket and allow that Crush Docket to be deleted.

[Refer Reverse Weighbridge document instructions on the release notes page.](#)



Roll Vintage Pictorial Instructions.

Un Updated Weighbridge Dockets can be deleted.



*Outstanding Grower Payments

End of Vintage Update will check for any outstanding **Grower Payments** and will not 'Roll' if it finds any.

There are three reasons for having outstanding **Grower Payments**:

1. You still have genuine outstanding payments to be made.
2. If you made any **Grower Payments** using the **Grower Manual Payment** option, then the **End of Vintage Update** does not recognise that the payments were made.
To overcome this, run the **Grower Payment Generation** program for the particular Payment Term. This will generate a ZERO payment which you'll need to update.

The **End of Vintage Update** will then regard the payments as being made and will allow the 'Roll' to proceed.

3. You could have old, obsolete or unused **Payment Terms** that are still set to: 'Pay Growers'... YES.
If the **End of Vintage Update** encounters these, it will not roll.
To address this, simply flag the 'Pay Growers' field in:

Winemaking - Weighbridge Reference Maintenance - Payment Terms to NO.

Vintage	Terms	Name	Pay Growers
<input type="checkbox"/> 2024	100%	100% Payment August	No
<input type="checkbox"/> 2024	AJA	April - June - August	No
<input type="checkbox"/> 2024	AMJ	April - May - June	No
<input type="checkbox"/> 2024	CONT	Contract Winemaking	No
<input checked="" type="checkbox"/> 2024	MMJS	Standard terms	Yes
<input type="checkbox"/> 2024	SPL	Split first payment	Yes

Roll Vintage Pictorial Instructions.

(i)..."Copy Grower Deliveries" - Set to **Yes** to copy forward the 'Estimated Tonnes'. Set to **No** will 'Zero' the Estimated Tonnes.

Please note, if the 2025 Vintage already has Estimated Tonnes (**Grower Deliveries**) recorded, then the option (i) above will NOT impact the Estimated Tonnes (**Grower Deliveries**).

(iii)..."Previous = Actual" - A **Yes** setting copies the 2024 Vintage's 'Actual' tonnes delivered forward and loads it as the 'Previous Tonnes' in the 2025 Vintage's 'Grower Deliveries' Maintenance program.

(iv)..."Weighbridge Analysis Bonuses" - A **Yes** setting will copy forward to the next Vintage the Weighbridge Analysis Bonuses you have setup for the current Vintage.

STEP 7. Inactivate old Stock Items and Codes

You may also wish to inactivate old/obsolete Bulk Wine Stock Items, Wine Codes, Wine Batches and Barrels.

A routine is included in the **End of Vintage Update** program to auto deactivate old/obsolete Bulk Wine **Stock Items**, Wine Codes & Wine Batches.

It searches for records with a 2-digit prefix less than the current Vintage YY. Current & New Vintage Stock Items, Wine Codes and Wine Batch Codes will not be impacted.

The routine checks:

Stock Item:

- Bulk Wine Area of Use
- un-updated Purchase Orders
- un-updated Sales Orders

*Any Wines/Batches with a **current volume** will NOT be inactivated*

It can only inactivate Stock Items/Wines/Wine Batches from after 2000. Any Items older than this will need to be manually inactivated.

It will skip any Stock Items/Wine codes that start with a 'B' or have only 1 digit representing the Year. These will also need to be manually inactivated using the procedures outlined below.

Stock Items

Can be made inactive by using:

Stock Control - Stock Administration - Global Stock Item Maintenance.

Select the Bulk Wine **Stock Group** and set all **Areas of Use** to NO. The program will NOT deactivate items with a current stock on hand balance.

Wine Batches

Can be made inactive by using

Winemaking - Winemaking Administration - Activate/Deactivate Wine Batch

Roll Vintage Pictorial Instructions.

Wine Codes

Can be deactivated by using:

Winemaking - Cellar Reference Maintenance – Wines

Barrels

Vessels in general can be deactivated by using:

Winemaking - Winemaking Administration - Activate/Deactivate Vessels

If you're using the Cost Rate field in Vessel Types to add depreciation costs for Barrels, then you should also review the Cost Rates set to ensure they're the appropriate value for the now one-year older barrels.

Winemaking – Cellar Reference Maintenance – Vessel Types

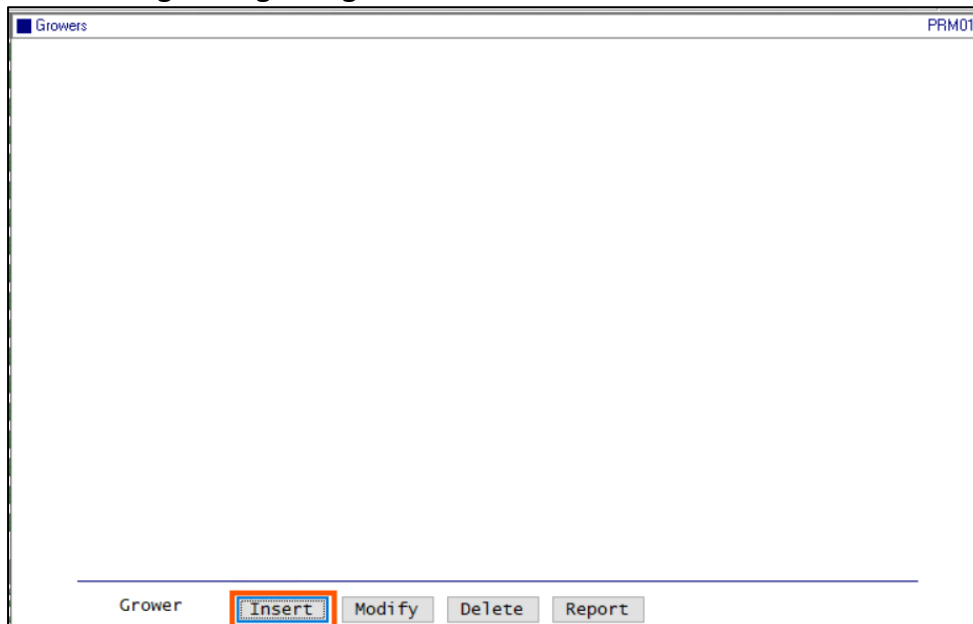
Growers / Sections / Grower Rate Types / Carriers / Harvest Operators

You can Deactivate **Growers, Sections, Grower Rate Types, Carriers** and **Harvest Operators** if they're not needed for the new vintage.

STEP 8. Additional set up for new Vintage

If you have New Growers for the coming vintage, you will need to create a new Grower record, create their Grower Vineyard Blocks and Grower Vineyard Sections, Payment Rate Types and record an expected Grower Deliveries.

Winemaking – Weighbridge Reference Maint. - Growers



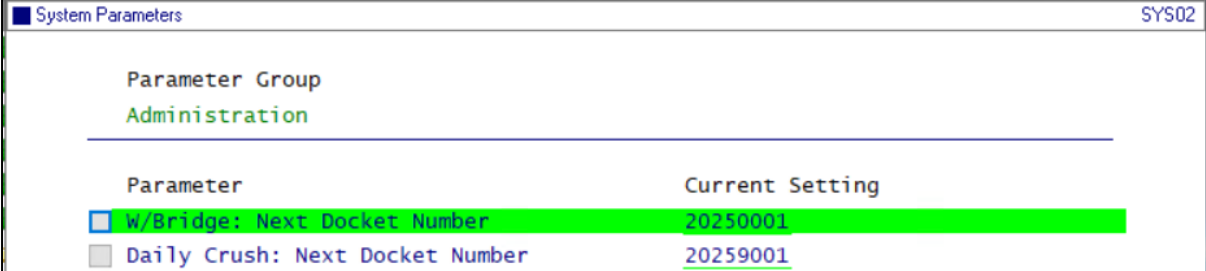
Roll Vintage Pictorial Instructions.

You can reset your Weighbridge and/or Crush Docket numbers to 20250001.

There is no requirement to do this;

System Administration - System Parameters - Administration (requires a password).

Scroll down to find:



Parameter	Current Setting
<input type="checkbox"/> w/Bridge: Next Docket Number	20250001
<input type="checkbox"/> Daily Crush: Next Docket Number	20259001