

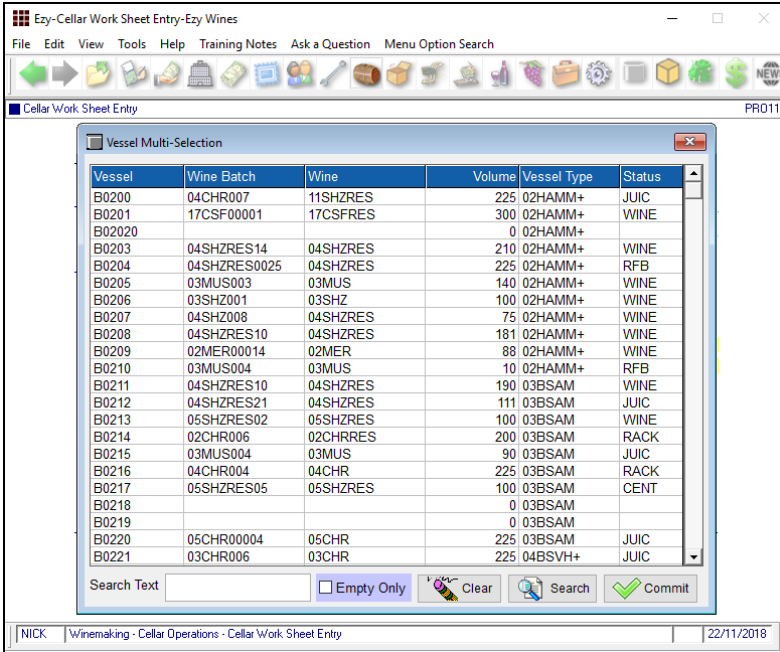
## MULTI-VESSEL SEARCH

### Cellar Work Sheet Entry

Click on the column headings to change the order of the vessels.

Specify whether only empty vessels are to be displayed.

Specify search text to be applied across each column.

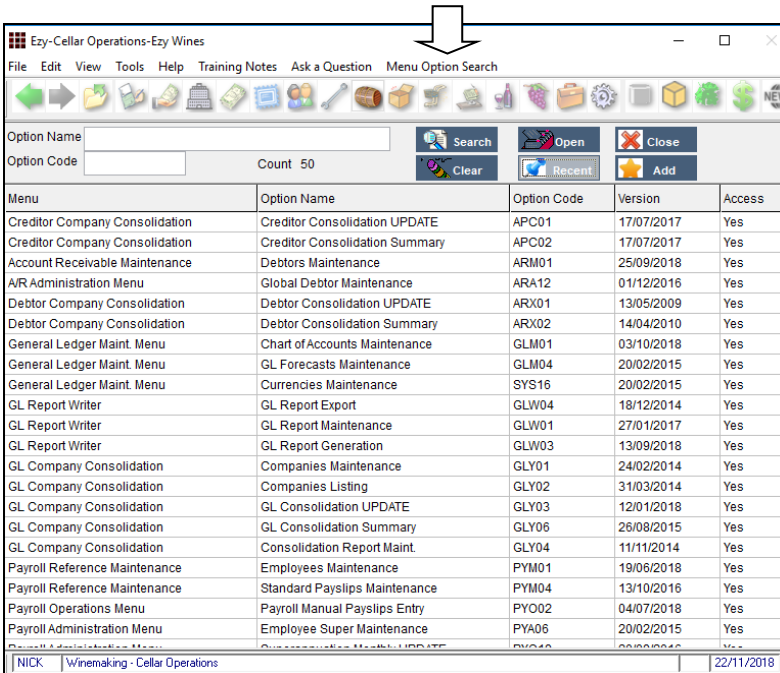


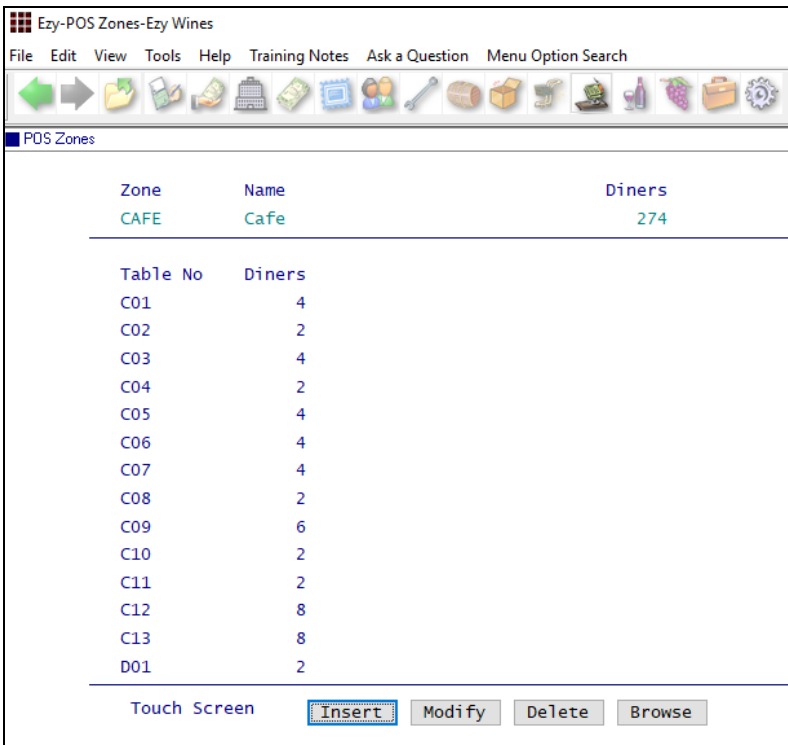
## FAVOURITES MENU

### Menu Option Search Tab

Select the [Recent] button and then the [Add] button to add the options you have accessed in the past 60 days to the Favourites menu.

Consolidating up to 60 menu options onto the one menu will make it quicker and easier for you to find your options.





## POS TABLE BUTTONS

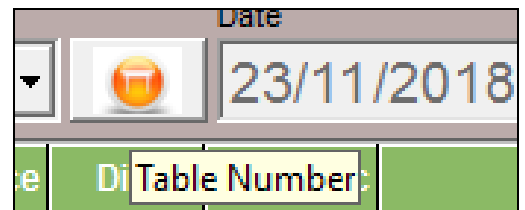
Quicker and easier to record table numbers.

### *Sales Reference Maintenance POS Zones*

Create a zone and record the table numbers.

### *C/Door: POS, Table Number Buttons*

Set this system parameter to Yes.



Click on the POS Table image to display the actual table buttons

